

LINEAR BOOTH

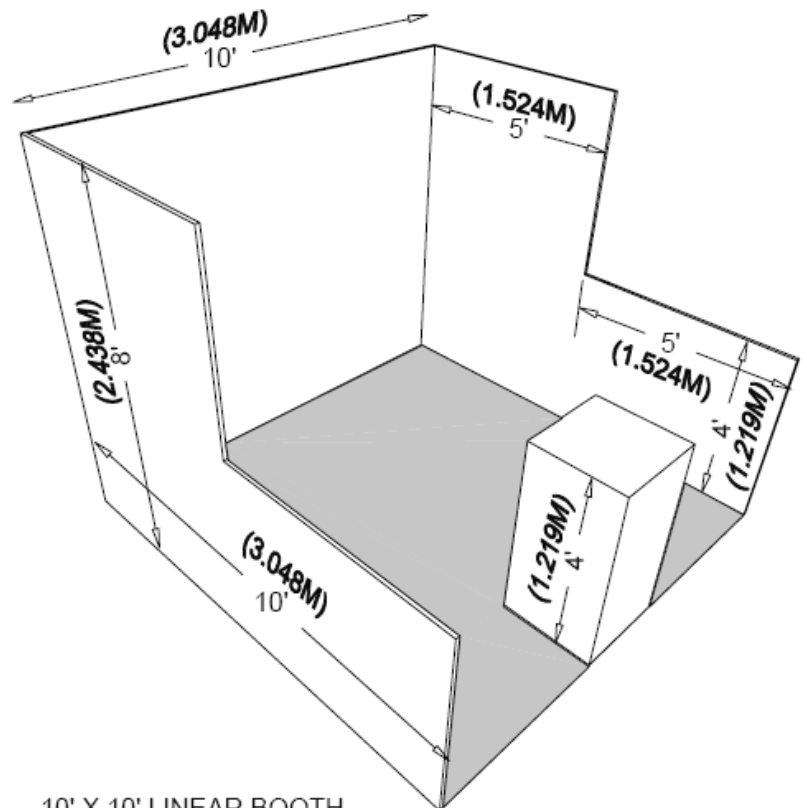
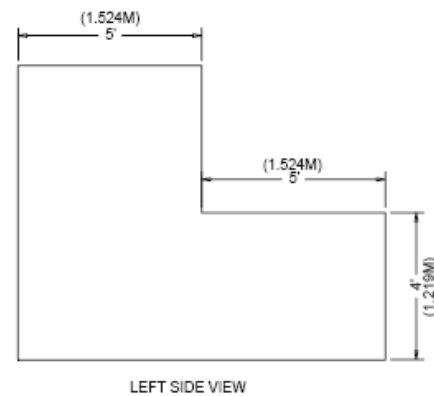
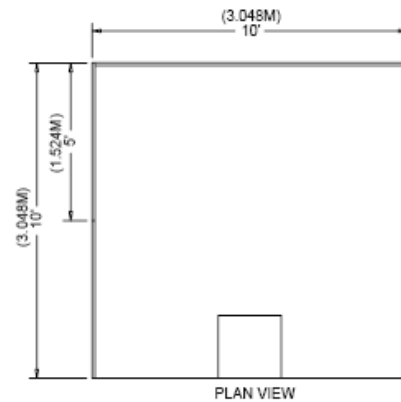
A linear booth has only one side exposed to an aisle and is generally in a series, in a row or straight line. They are also called “in-line” booths.

Dimensions

Linear booths are 10 ft. wide and 10 ft. deep with a maximum backwall height limitation of 8 ft.

Use of Space

Regardless of the number of linear booths combined, e.g. 10'x20', 10'x30', 10'x40', etc. display materials should be arranged in such a manner so as not to obstruct sight lines of neighboring exhibitors. The maximum height of 8 ft. is allowed only in the rear half of the booth space, with a 4 ft. height restriction imposed on all materials in the remaining space forward to the aisle. Note: When three or more linear booths are used in combination as a single exhibit space, the 4 ft. height limitation is applied only to that portion of exhibit space which is within 10 ft. of an adjoining booth.

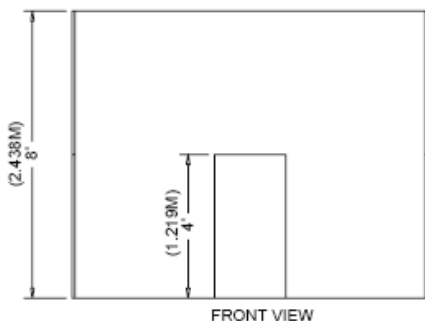


CORNER BOOTH

Dimensions and Use of Space

A corner booth is a linear booth that is exposed to aisles on two (2) sides.

All other guidelines for linear booths apply to corner booths.

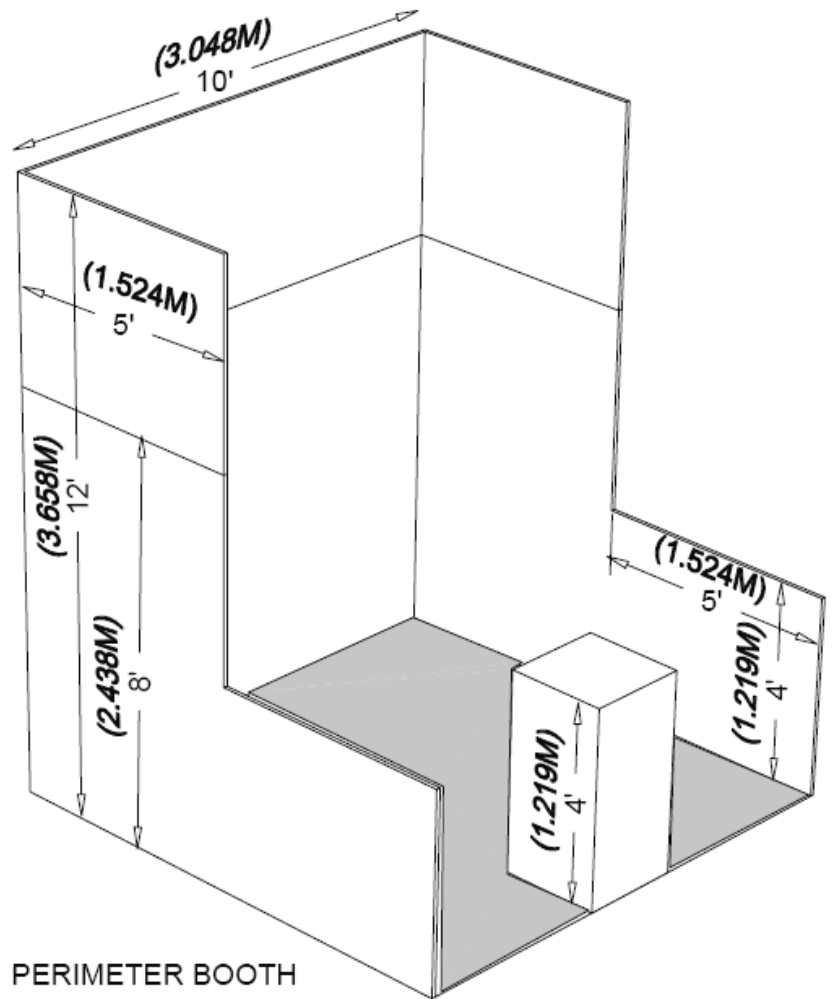
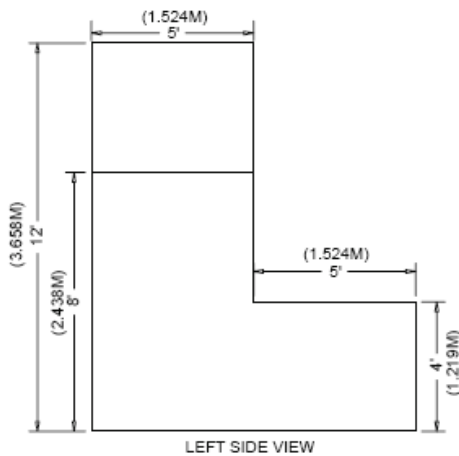
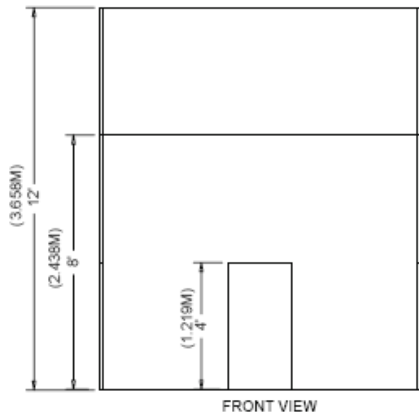
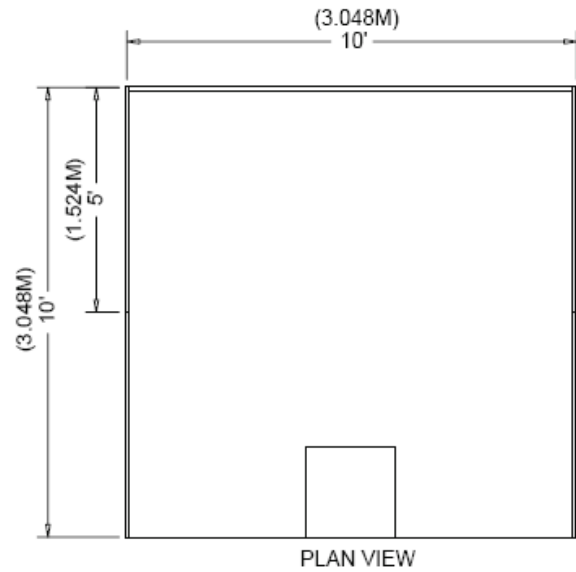


PERIMETER BOOTH

A perimeter booth is a linear booth that backs up to an outside wall of the exhibit hall or facility (rather than to the backwall of another exhibit booth).

Dimensions and Use of Space

All guidelines for linear booths apply to perimeter booths except the maximum backwall height for perimeter booths is 12 ft. (vs. 8 ft. for linear booths).



10' X 10'

ISLAND BOOTH

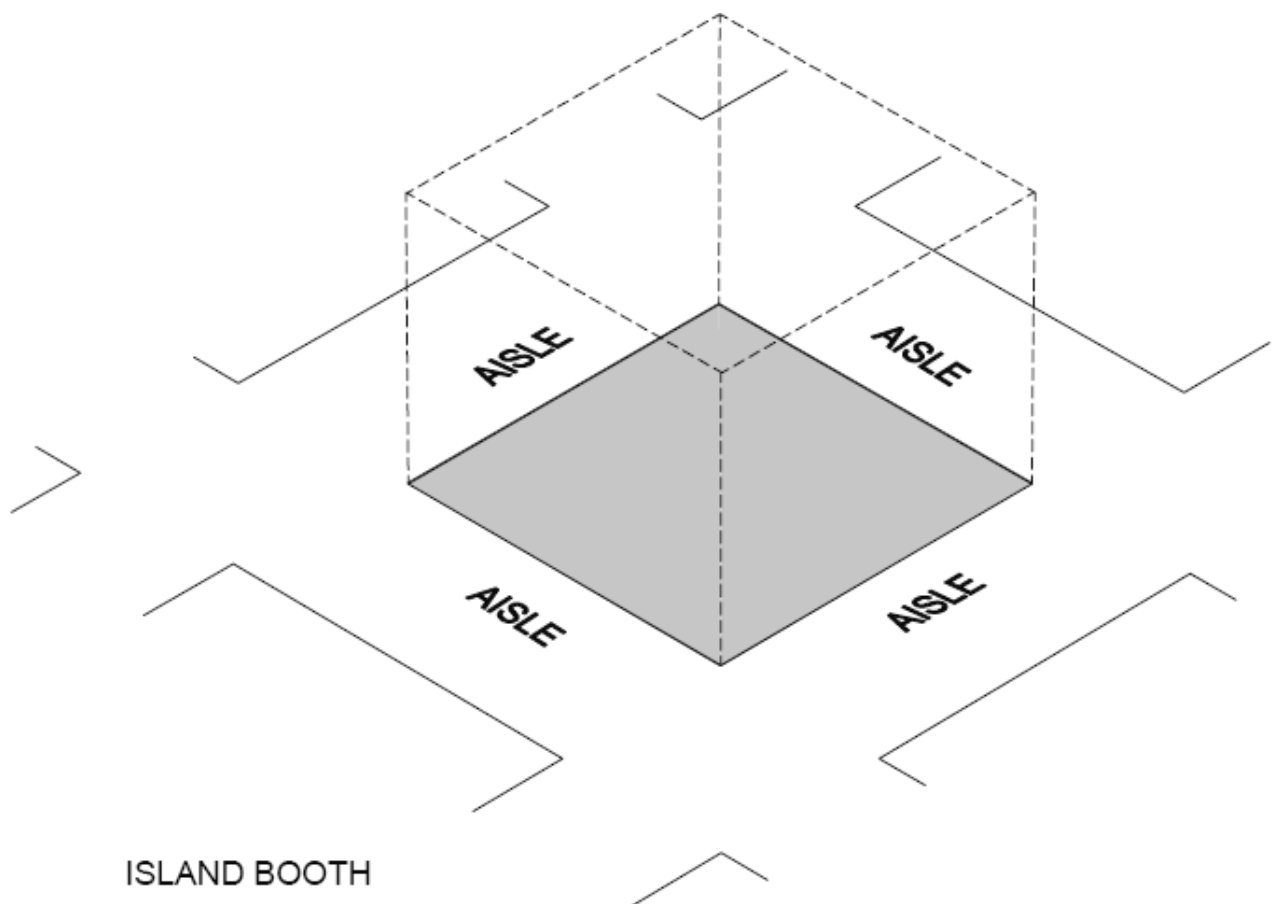
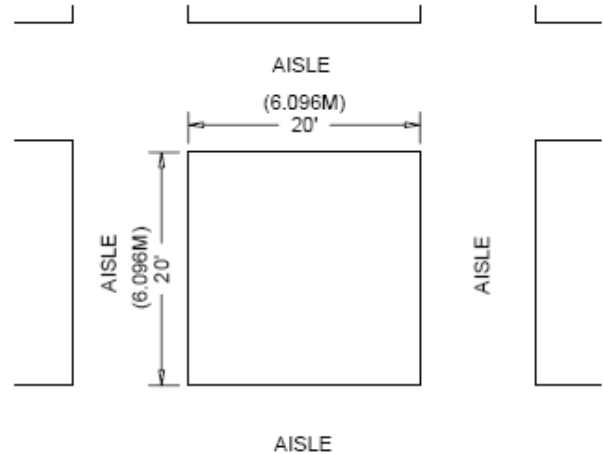
An island booth is any size booth exposed to aisles on all four (4) sides.

Dimensions

An island booth is typically 20'x20' or larger, although it may be configured differently.

Use of Space

The entire cubic content of the space may be used up to the maximum allowable height, which is twenty ft., including signage. However, machinery and equipment must be positioned at least 1 ft. from any aisle and arranged in such a way that they are not dangerous to others.



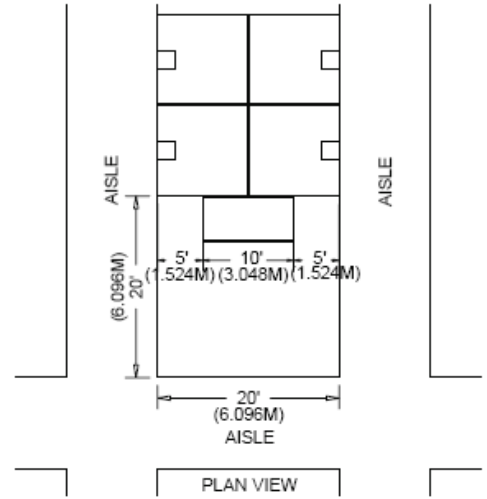
PENINSULA BOOTH (END CAP) or SPLIT ISLAND BOOTH

A peninsula booth or split island booth is exposed to aisles on three (3) sides and composed of a minimum of four (4) booths.

- (a) one which backs up to linear booths, or
- (b) one which backs up to another peninsula/split island booth.

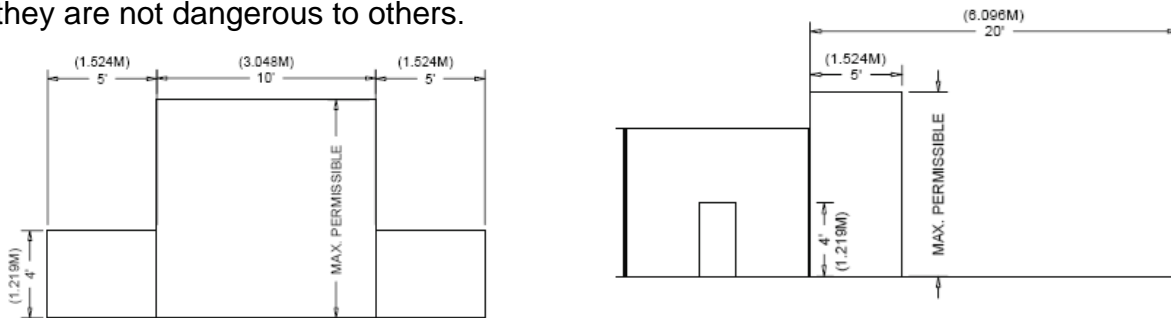
Dimensions

A peninsula or split island booth is usually 20'x20' or larger. When a peninsula booth backs up to two linear booths, the backwall is restricted to four ft. high within 5 ft. of each aisle, permitting adequate line of sight for the adjoining linear booths. Eight ft. is the maximum height allowance, including signage for the center portion of the backwall. No sign hanging is allowed.



Booth configurations which contain an unfinished backside must be finished or covered in a professional manner so they do not present an unsightly appearance when viewed from adjoining booths or aisles. Show management may order masking drape at exhibitor's expense if deemed necessary.

A split island booth may be used up to the maximum allowable height of 20 ft. which can include the entire width of booth space (cubic content rule). Maximum height is 20 ft., including signage, no line of sight is required. However, machinery and equipment must be arranged in such a way that they are not dangerous to others.



FRONT VIEW

